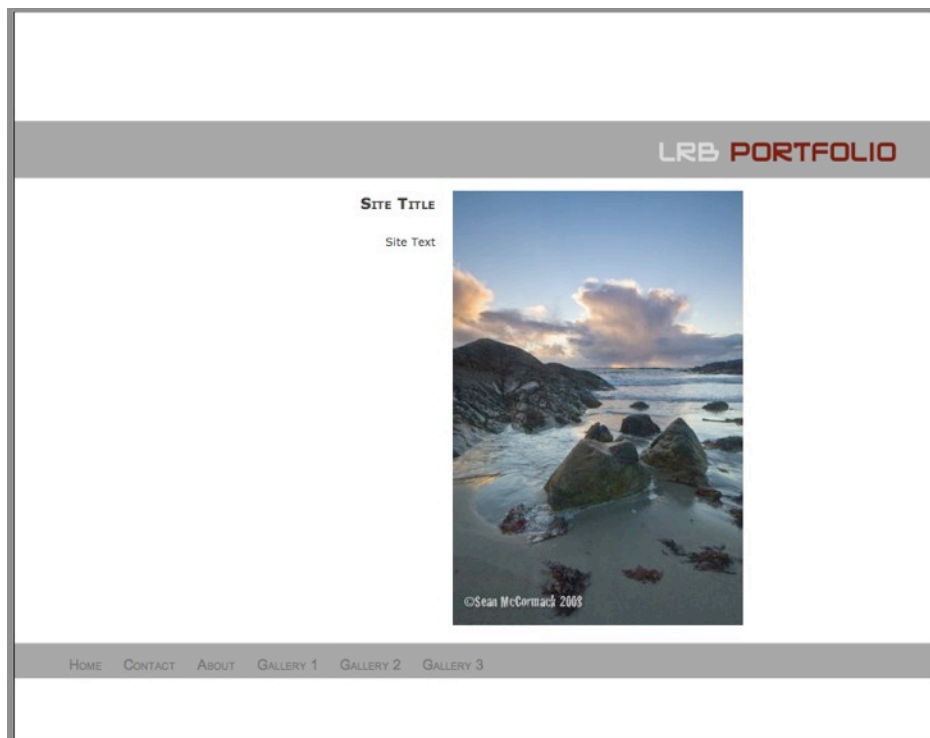


LRB PORTFOLIO USER GUIDE



LRB Portfolio from Lightroom-Blog.com is a true website in a gallery. Everything you need to create a website from scratch is built in. The website features a Home Page, About Page, Contact Page and up to 6 Galleries. The Gallery links can also be substituted for external links to your blog, or a client page. There's no need to create multiple galleries, or hand code a gallery page to link to them. All can be done from within LRB Portfolio. The base of the code for the galleries is that of a simple scrolling gallery. There are no thumbnails, and no image links, what you see is what you get. Quite a number of photographer sites use this. Here's a few examples:

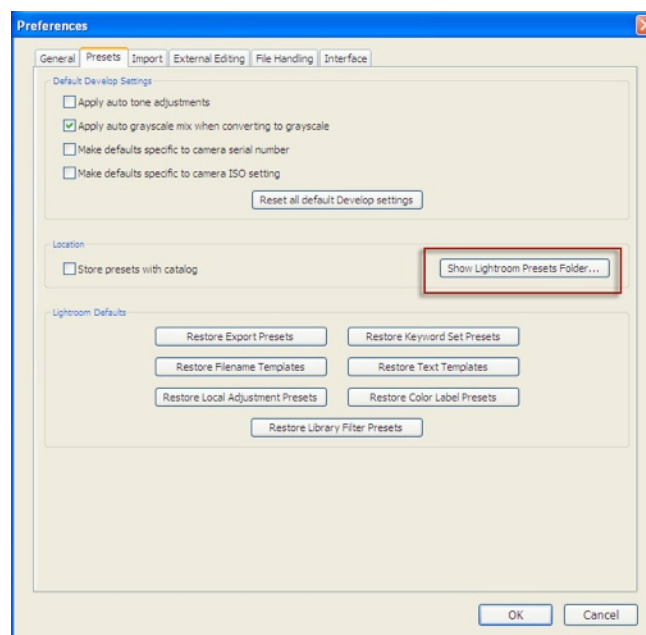
Stephen Eastwood: <http://stepheneastwood.com>
 Clicio Barroso: <http://clicio.com.br/english/beauty.html>
 Patrick Hoelck: <http://www.patrickhoelck.com/home.html>
 Pablo Vicente: http://pablocvicente.com/female_models_01.htm
 Stefan Soell: <http://stefansoell.de> (some of this is not safe for work)
 Stephen Vigar <http://www.stevenvigar.com/>

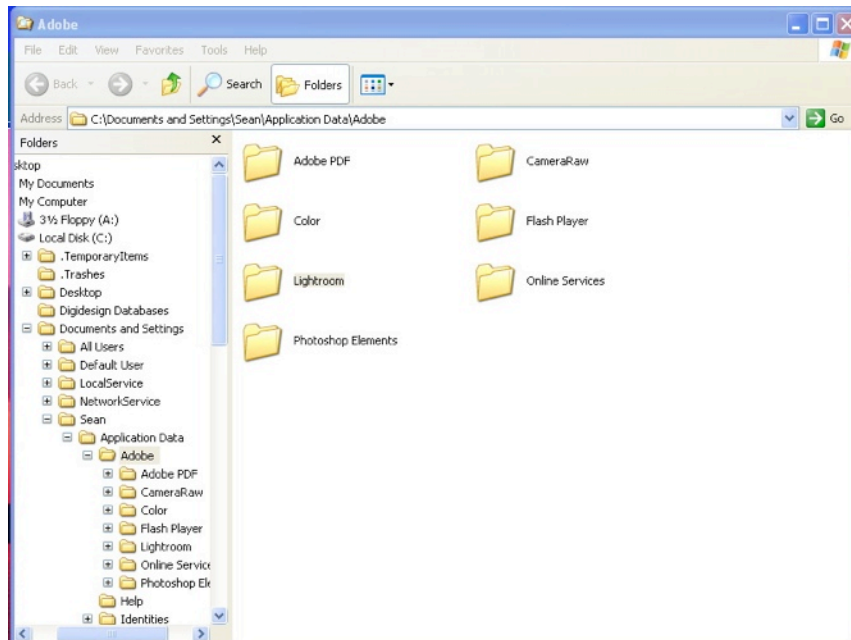
One key feature of these is that the image height is fixed, irrespective of the length, and that is my intention with this gallery design. The base image size is 600X400 pixels, rendering the images 400 pixels high. Using the combination of image height and width controls, you should aim for this fixed height, no matter what your preferred image height is, to keep the layout clean.

Installation

Mac: Simply double click on LRB Portfolio.lrbengine and it will install. You can also install the sample Web Templates this way too. To keep the Templates in a folder, following the Windows instructions to find the right location.

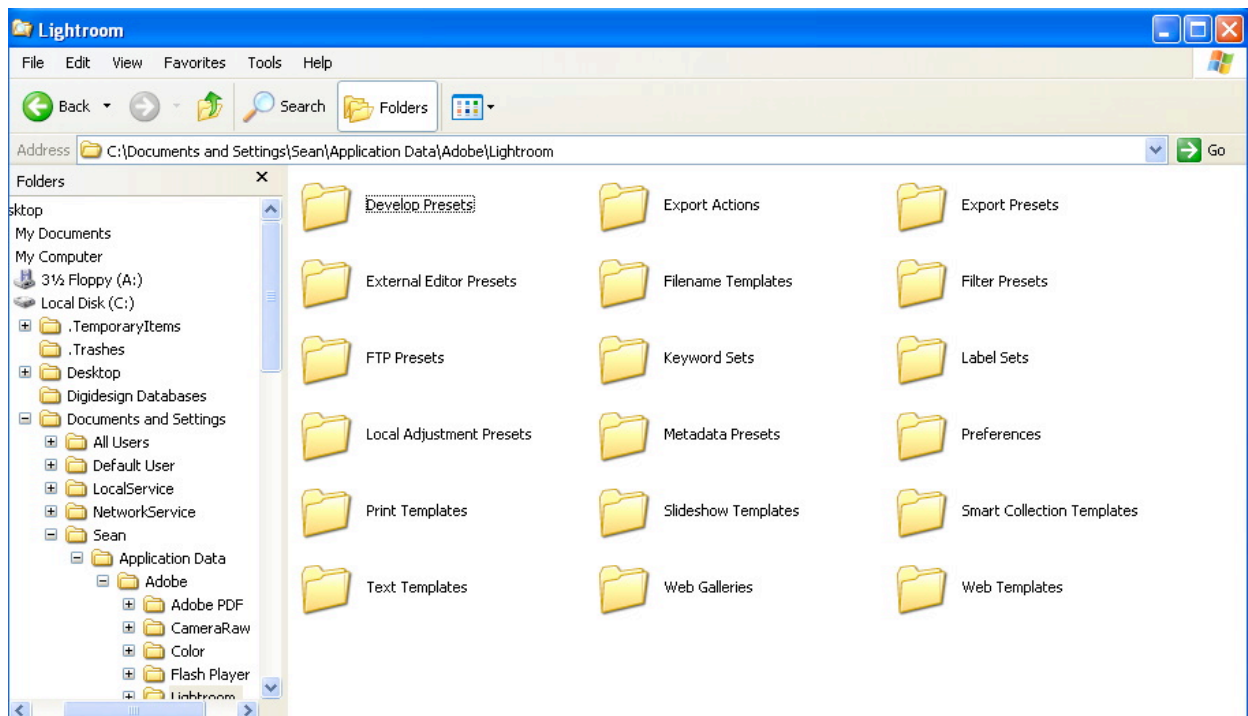
Windows: Go to Edit>Preferences and select the Presets tab. Click on the 'Show Lightroom Presets Folder' button.





Double Click on the Lightroom folder.

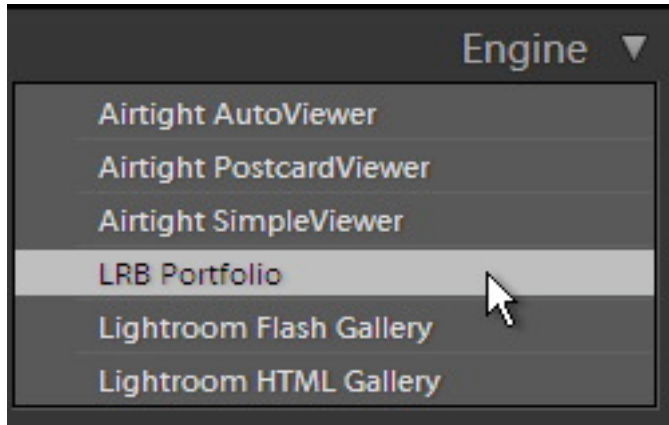
Inside this folder, create a new folder called Web Galleries. If you've installed other 3rd party galleries, this may already exist. Please note that this is not the same as Web Templates.



Copy the LRB Portfolio.Irwebengine folder into the Web Galleries folder. Place the Template folder (LRB Portfolio Templates) in the folder Web Templates. Restart Lightroom.

Using LRB Portfolio

As with all Lightroom Web Galleries, LRB Portfolio will be found in the Engines panel, in the Web Module. Click the arrow to the left of Engines to open the panel, revealing all currently installed Engines. Click on LRB Portfolio to select.



Note: If you see a page similar to the following image, don't worry, nothing's actually broken, you simply don't have enough images for the number of gallery selected. We'll get to that next!



Setting Up: Number of required images.

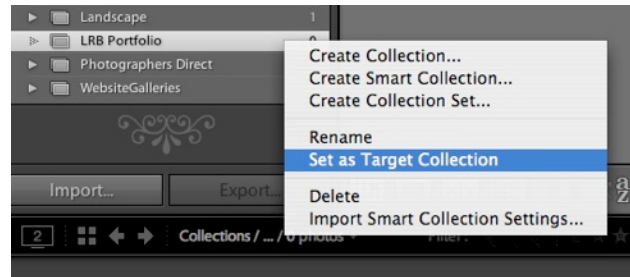
Because LRB Portfolio contains a whole website, it requires some advanced planning. In order to make a website possible from a gallery, something has to be fixed in advance. In this case, it's the number of images per gallery. Portfolio galleries demonstrating ability need not be large. Similar to a printed portfolio, 20 images is quite a large number, and

this is the LRB Portfolio default. You can of course have 100 if you like, but that requires a lot of sorting and preparation on your behalf.

When you've decided on the number (we're going to use 20 for our example), the next decision is the number of galleries to make. You can choose up to 6 galleries, or a mix of galleries and external links. For our example, we're going to choose 3 galleries and 1 external link to our blog. This means we need $20 \times 3 = 60$ images to start creating the website.

Setting Up: Preparing the collection

Select the 60 images for the site and place them in a collection. You can use the Target Collection feature of Lightroom 2 to aid with this. Go to the Library Module. Create a blank collection called LRB Portfolio. Right Click (or Control Click on Macs with one mouse button) on the collection and select 'Set as Target Collection' from the contextual menu. A little + will appear after LRB Portfolio to indicate it is the target collection. To add an image to this collection simply hit the 'B' key (remember that if an image is already in the collection, 'B' will remove it from the collection).



Add images to the collection until you have the total required. Then select the collection and begin sorting. In our sample case, we select 60 and then start to sort them into 3 groups of 20. By dragging and dropping in Grid Mode, we can sort into the order we want for our galleries. Each set of 20 is a new gallery, so we balance our selection with that in mind.

Once preparation is complete, go to the Web Module and select LRB Portfolio from the Engine panel. We're now ready to begin creating the website proper. The first panel we'll go to is the Site Info panel.

Home Page

The home page has 2 editable options. The Site Title, which alters the headline on the page (and the page title) and Site Text which changes the text on the page.

In the text section (and in that of About) use the HTML tag `
` to create a new line, or use `<p></p>` to create paragraph sections.

SEO

Some folks asked for HTML metadata, so here's on for Metadata Keywords

About Page

The About Page options are identical to those of the Home Page, with text boxes for the Headline, Text and About Page Image Number.

Image Numbers

This section allows you to choose which images appear on the Home, Contact and About pages. The maximum number you should choose is the total number of images in the gallery. Higher than that and you'll get the error message shown on page 3.

Contact Page

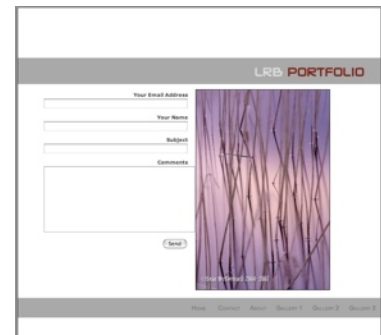
There are 2 main options for the Contact Page: A PHP contact form and Contact Details, where you enter a number of things from a list of Contact Name (which can also be an Email Link).

Contact Form

If you elect to use the form you need to open the LRB Portfolio.lrwebengine folder (Mac users, control click on the icon and choose 'Show Package Contents'). Open the file mail.html and change the line \$recipient = ['YourAddr@YourMail.com'](mailto:YourAddr@YourMail.com);

Swap YourAddr@YourMail.com with your actual email address. This is necessary to hide the email address from spambots searching for easy pickings.

To enable the form click the 'Show Contact Form' checkbox. Note: This form uses PHP, so your server should have it installed if you want to use this. It won't work in the preview window, only online. Also safe mode must be off for it to work.



Contact Details

Contact details can be added to the page along with, or instead of the form. Each of the checkboxes shown on the left here allow a different detail to be added:

Contact Name, Contact Name as a Link, Email, Phone, Mobile/Cell, Fax and Address details.

Once you decide what you want to have appear on the page, enter the details in the next section. There are 2 email address entries, one includes a 'mailto:' for a clickable email link, while the other is merely for showing on the page. Again, be warned about using such a visible email address if you are worried about spam. Any text can be entered in the other text boxes, so it's okay to Ext. numbers etc.

To create multiline Addresses, add a
 tag to create a new line. The new line will be visible on the preview, but not in the text box.

In the resources folder there is a test.php to check the php settings on the site once uploaded. To use type add / resources/test.php to your site location and search for safe mode and make sure it's set to off.

Site Info ▾

Home and About Info

Site Title ▾
Site Title

Page Title ▾
Page Title

Site Text ▾
Welcome Note

About Headline ▾
About Me

About Page Text ▾
This is lots of text telling you all about me

SEO

HTML Metadata Keywords ▾

Non Gallery Page Images

Home Page Image number ▾
1.00

About Page Image number ▾
1.00

Contact Page Image number ▾
1.00

Contact Page Options

Show Contact Form
 Show Contact Details
 Show Contact Name
 Use Contact Name as Link
 Show Email Details
 Show Phone Details
 Show Mobile/Cell Details
 Show Fax Details
 Show Address Details

Contact Page Settings

Contact Info ▾
Contact Name

Web or Mail Link ▾
mailto:user@domain

Email Address (no Mailto:) ▾
user@domain

Phone Number ▾

Mobile/Cell Number ▾

Fax Number ▾

Address ▾

Navigation Menu

Next up we have the controls for the look of the menu text and the content of the menu.

Menu Settings

Menu Font-Family
Arial, Veranda, sans serif

Menu Font-Variant
small-caps

Menu Font-Size
13px

Menu Font-Weight
normal

Menu Font

There are 4 controls for the font in the menus.

The Font Family which allows you to choose the Typeface. You should be aware about web compatible fonts here, as the cool font you like may not be on the other persons computer.

Next is the Font Variant. Choices are small-caps and normal.

To change the size of the font, use Menu Font-Size. Make sure you add the dimension after. It could be in px, pt or em for example.

Finally we have the Font Weight which can be lighter, light, normal, bolder or bolder.

Menu Links

Included Pages

- Show Home Page Link
- About Page
- Contact Page
- Gallery 1
- Gallery 2
- Gallery 3
- Gallery 4
- Gallery 5
- Gallery 6

Menu Names and Links

About
About

About Link
about.html

Contact
Contact

Contact Link
contact.html

Gallery 1
Gallery 1

Gallery 1 Link
gallery1.html

Gallery 2
Gallery 2

Gallery 2 Link
gallery2.html

Gallery 3
Gallery 3

Gallery 3 Link
gallery3.html

Gallery 4
Gallery 4

Gallery 4 Link
gallery4.html

Gallery 5
Gallery 5

Gallery 5 Link
gallery5.html

Gallery 6
Gallery 6

Gallery 6 Link
gallery6.html

It's a little squished here, but to the left we have the last part of the Site Info panel. At the top we have the check boxes where we decide what pages to include in the Website. Even if you only want 3 galleries, you can of course decide to add external links.

To add an external link, tick the checkbox of gallery 4, then in the Gallery 4 section, replace the text 'Gallery 4' with the menu text you desire. We've said that we'll add our blog, so we simply change it to read Blog.

If you are using the gallery page, leave the gallery*.html pages there, but feel free to change the name of the link to something more appropriate, like 'Beauty', 'Weddings, or 'Landscapes'.

There's also nothing to stop you from swapping positions in the menu by simply putting different names and links in any position. So you could stick About and about.html in the Contact and Contact link and vice versa.

1.02 adds 2 external links and controls for them, while 1.03 adds an option for them to open in a new window.

Included Pages

- Show Home Page Link
- About Page
- Contact Page
- Gallery 1
- Gallery 2
- Gallery 3
- Gallery 4
- Gallery 5
- Gallery 6
- External Link 1
- External Link 2

External Link 1 Name
External Link 1

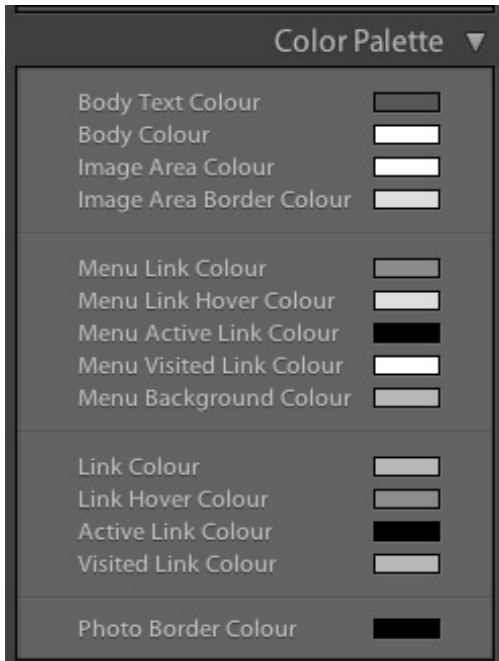
External Link 1 URL
http://lightroom-blog.com

External Link 2 Name
External Link 2

External Link 2 URL
http://lightroom-blog.com

New Window for External Links

Color Palette



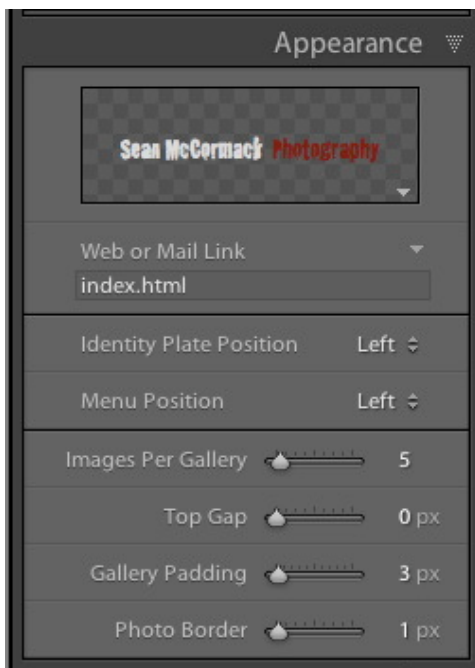
The Color Palette is where you change the colours to set the look of the website. The base model is based on Black, White and shades of Grey, but there's no need to use such simple colouring. A good idea would be to look at Adobe Kuler: <http://kuler.adobe.com/> to see some useful colour palettes for design. I've included a few sample colour sets in Template forum in the package, just for show, rather than anything else.

First up are the main colours: Body Text and Body Colour, followed by the central Image Area Colour. There's also a top and bottom border colour, controlled by Image Area Border Colour. Next is the Menu section, where you control the colour of the 4 states of the menu link: normal, active, hover and visited. The last part controls the colour of the menu and that of the ID Plate section.

The penultimate section deals with links also, but just normal links in the text, like when 'Use Contact Name as Link' is selected. The normal link colours may not live update, but will change when other settings are applied.

Finally the Photo Border Colour chip sets the colour of the area surrounding each picture. The width of this is set in the next panel: Appearance.

Appearance



The appearance section sets the look of the internal elements of the gallery.

First we have the Identity plate Checkbox, where we turn on and off the ID Plate. I recommend using it. To edit the ID Plate, click the triangle on the bottom right of the ID Plate window.

Next is the Web or Mail Link section. By default it's set to the home page. You can enter in any relative or absolute web address here, or an email address by adding 'mailto:' before the email address.

The Identity Plate Position control has 3 settings: Left, Centre and Right, corresponding with the physical location on the page.

Similarly Menu Position places the menu text on the left, centre, or right of the screen. Even if these don't preview correctly on your system (they do look fine on most), they export correctly.

Images per Gallery sets the number of images on each gallery page. As is mentioned in the setting up section, you need to multiply this number by the number of galleries ticked to get the number of images required for the website.

Gallery Padding sets the width between images. This is there from feature requests in the first non website version of this site.

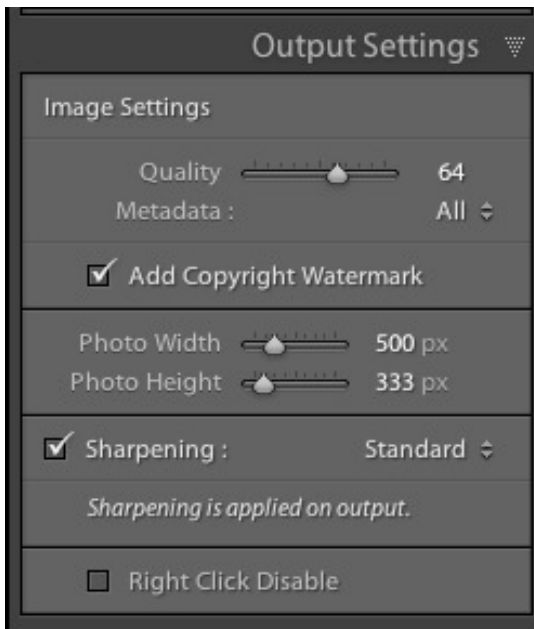
Top Gap pushes the whole site further down the page.

Photo Border sets the width of the border on each image on the site.

Image Info

The Title information here is added to the Alt and Title sections of the image, appearing as a tooltip on the image.

Output Settings



The Output Settings section is where we apply our image controls.

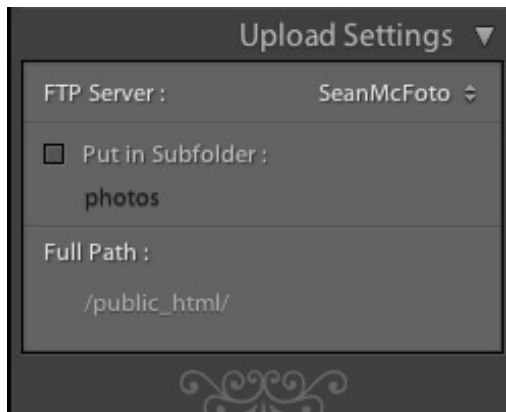
The first Slider sets the amount of JPEG compression applied. This affects 2 things: Size and Quality. 70% will create files that are roughly 120K at 600X400 pixels, but look good. 50% will produce much smaller and faster loading images, but will cause banding in graduated sections of your image. It's best to try the settings to see what works for the website.

Metadata has 2 settings: All, which applies all metadata from the original to the web version, or Copyright Only, which applies only the Copyright information from the original file. It's the equivalent of 'Minimize Metadata' from the Export Dialog box. Add Copyright Watermark writes whatever is in the Copyright section of Metadata over the image as a watermark.

After the section break we have the Photo Width and Photo Height controls. Use these to fix the height you require. These controls do interact so if you are mixing portraits and panoramas, you may have a height of 400 mixed with a width of 1000. The images ratio will not allow images go to 1000 if the height is already 400. A new feature of Lightroom 2 galleries is Sharpening. You can use the tick box to turn it on and apply 3 levels of sharpening: Low, Standard and High. This is not visible in the Preview, but shows on Export.

Finally, you can disable right clicking by clicking the Right Click Disable box. This is a Javascript too, replacing the previous setting from version 1.0, which caused image loading to break in Safari.

Getting it Online



Once you've created the Website and are happy with the whole things, either click Export and then use an FTP program to upload the site, or use Upload. In that case set up the FTP Server settings as recommended by your host. If you want to test the website first, Tick the 'Put in Subfolder' box and choose the name of the test folder. Otherwise, if this is to be a main website, turn this off, and make sure that your FTP settings are uploading to the root folder on your website. Please note that this panel is part of Lightroom and not the actual gallery. Support for this section is

from the Adobe forums, not from the gallery Support.

Support

Support for this gallery can be had through the comments part of the post on <http://lightroom-blog.com/> or through the Support thread on <http://lightroomforums.net/>

Notes

Even if you're only displaying 50 images, Lightroom will generate all photos in a collection. So if you have 60 images total in the galleries you can cheat a bit and make a collection with 63 images. Then in the Non Gallery Page Images section, you can have image 61 on the home page, 62 on the About Page and 63 on the Contact Page. You could for instance use a photo of yourself on the about page, without needing to display in a gallery.

The gallery generates 6 gallery pages, even if you're not using them. They're very small and can be ignored, or deleted. I will attempt to add code to stop this at a later stage.

If you only want 15 images in one gallery, with 20 in the others, create either a blank image the same colour as the image area background colour and use these as filler. You can also go to the appropriate gallery.html page and delete these references in the exported file.

I've mentioned this already, but you can swap links around by entering different names and page links in any of the Menu Names and Links section.

History

V1.0: First version

V1.01. Fixed menu sticking out bug in IE, Swapped right click code to prevent break in Safari, moved photo sizes to output.

additions: Added SEO sections, Add Home page menu removal tickbox, added section names for clarity. Added Top Gap control to change site position on the page. Added Title to Images info and onto images.

V1.02 Added 2 external links and test.php file.

V1.03 Increased Max Width to 2500px. Changed manifest to generate only used files. Add an option to allow external links to open in a new page instead of the current page.